



# CENTRAL COAST BASKETBALL RETURN TO PLAY GUIDELINES





Central Coast Basketball is thrilled to be able to reopen our doors to our sporting community. We ask that you familiarise yourself with the following guidelines to provide a smooth transition to our post covid-19 policies and requirements.

The following guidelines are developed in conjunction with the NSW government and Basketball NSW with the primary intention of restricting the number of people within stadiums at any one time to reduce the chances of person to person transmission of COVID-19.

The information in this document will be adjusted as required with the release of further information and guidelines as time progresses. Please ensure that you remain up to date with current information which will be communicated via email and our social media channels.

**PLEASE STAY AT HOME IF YOU ARE FEELING UNWELL, HAVE ANY COVID-19 SYPTOMS (COUGH, SORE THROAT, FEVER, FATIGUE OR SHORTNESS OF BREATH) OR IN THE LAST 14 DAYS YOU HAVE HAD CLOSE CONTACT WITH A KNOWN OR SUSPECTED CASE OF COVID-19. ANYONE WHO IS UNWELL OR HAS BEEN IN CONTACT WITH A CONFIRMED CASE OF COVID-19 SHOULD CONTACT A DOCTOR IN ACCORDANCE WITH NSW PUBLIC HEALTH AUTHORITY GUIDELINES**

## CONTENTS

HYGIENE PROTOCOL	PAGE 3
VENUE CAPACITY LEVELS	PAGE 4
PROGRAM SUMMARY	PAGE 5
WHAT TO EXPECT WHEN ENTERING THE STADIUM	PAGE 6
VENUE MAP	PAGE 7



STAY HOME IF  
YOU ARE FEELING  
UNWELL.



MAINTAIN 1.5M  
SOCIAL DISTANCE  
WHERE POSSIBLE.



ARRIVE ON TIME,  
LEAVE PROMPTLY.



CLEAN EQUIPMENT.



HAND HYGIENE ON  
ENTRY AND EXIT.

	STAGE 1			STAGE 2			STAGE 3			STAGE 4		
AREA OF STADIUM	PAX	AREA	m2 PP	PAX	AREA	m2 PP	PAX	AREA	m2 PP	PAX	AREA	m2 PP
Hall 1 (Courts 1-2)	0	1225m2	n/a	100	1225m2	12	250	1225m2	5	500	1225m2	2.5
Hall 2 (Courts 3-4)	0	1225m2	n/a	100	1225m2	12	250	1225m2	5	500	1225m2	2.5
<b>Total</b>	<b>0</b>	<b>2450m2</b>	<b>-</b>	<b>200</b>	<b>2450m2</b>	<b>-</b>	<b>500</b>	<b>2450m2</b>	<b>-</b>	<b>1000</b>	<b>2450m2</b>	<b>-</b>

### ARRIVAL

Players should aim to arrive no earlier than 10 minutes prior to the start of their game and no later than 5 minutes prior. Each court will have a designated waiting area prior to entering the courts. Participants and officials cannot enter the court area earlier than the designated time prior to their game/activity or before the participants and officials of the previous game have departed. Staff will advise players when they can enter their courts.

### BASKETBALLS

Any basketball brought into Central Coast Basketball (CCB) venues will be required to be sanitised upon arrival. CCB will not loan basketballs to participants. Casual shooters and representative players are to bring their own basketball to shoot or train with however these balls must be sanitised upon arrival when completing the attendance sign in hygiene and sanitisation process. Central Coast Basketball will not loan basketballs to casual shooters. **For Domestic competitions players are not permitted to bring their own basketball into the Stadium.**

### BREAKS BETWEEN GAMES & TRAINING SESSIONS

A small break between games, training sessions and development programs will be required to allow time for participants & officials to depart and arrive without contact. This will also assist staff to ensure all sanitisation requirements are met, prior to the next time slot.

### CAPACITY CONTROL

CCB Staff will maintain strict counting of capacity within the stadium and on each court to ensure that limits are not exceeded.

### CASH HANDLING

At this stage, CCB will not be accepting cash payments. Transactions can be made online through our website or electronic funds transfer to our nominated bank account.

### DESIGNATED ENTRY & EXIT

CCB will require all participants, officials and staff to enter through the main entrance where they will be required to sanitise hands and sign in before progressing through the stadium. After participants and officials have finished their game or activity, staff will guide them to their relevant exit before allowing the next group of participants to enter the stadium.

### OFFICIALS

Where possible, officials will remain in consistent groupings e.g. remain on the same court for multiple games or sessions. If any officials become aware that the court is not complying with the guidelines the game will be stopped until the situation can be rectified.

### SANITISATION

Hand sanitiser will be provided upon entry and exit as well as at each score bench. Players and officials will be required to use hand sanitiser at each break, including timeouts and as substitutions enter and exit the game. Players are also encouraged to bring their own 100ml hand sanitizer, to assist in quick access.

### TOWELS & DRINK BOTTLES

Participants and officials should bring their own towel and drink bottle. Water fountains, the canteen and vending machines are all closed until further notice

### BIOSAFETY OFFICIALS

All CCB staff will be trained as biosafety officials and will manage the restrictions enforced by the government and the association. Staff will oversee social distancing, numbers of participants, management of basketball hygiene and player compliance.



	PROGRAMS	CURRENT INFORMATION AS OF THE 12 <sup>TH</sup> JUNE 2020
REPRESENTATIVE	<b>Individual Training</b>	Recommences from Monday 15 <sup>th</sup> June - Limited availability. To book, email <a href="mailto:highperformance@bistadium.com.au">highperformance@bistadium.com.au</a>
	<b>Team Training</b>	Recommences from Monday 22 <sup>nd</sup> June. Direct contact has been made with Coaches in relation to training days and times. No more than 10 participants per court (excludes coaches and support staff).
	<b>Junior (Rebels)</b>	Restructured 'Country Challenge Tournament' will be held on various weekends during August and September. The opportunity for additional skills days and interclub competitions are being assessed currently with more information to be released shortly.
	<b>Senior (Crusaders)</b>	Season will recommence on the 18 <sup>th</sup> of July with a reduced number of games. Finals weekend has been scheduled for the 19 <sup>th</sup> and 20 <sup>th</sup> of September 2020 (venue TBC). Draw is expected to be released in 7-10 days.
DEVELOPMENT	<b>Basketball Minis</b>	Classes will recommence from Monday the 20 <sup>th</sup> July 2020 (Term 3, Week 1). Maximum of 10 participants and 10 parents per session.
	<b>Aussie Hoops (Saturdays)</b>	Classes will recommence from Saturday 25 <sup>th</sup> July 2020 (Term 3, Week 1). Maximum of 20 players and 20 parents per session.
	<b>Skills Development Sessions</b>	Classes will recommence from Friday 24 <sup>th</sup> July 2020 (Term 3, Week 1). Maximum of 20 players and 20 parents per session.
	<b>School Holiday Camps</b>	School Holiday Camps will be held on Tuesday 7 <sup>th</sup> July, Thursday 9 <sup>th</sup> July, Tuesday 14 <sup>th</sup> July and Thursday 16 <sup>th</sup> July. More information will be released shortly. Maximum of 80 participants per session.
	<b>In School Basketball Sessions</b>	We will await further information from our partnered schools.
COMPETITION	<b>Junior Domestic Competition</b>	Competition will recommence from Monday the 20 <sup>th</sup> July 2020 (Term 3, Week 1). Team nominations will be released on Tuesday 16 <sup>th</sup> June 2020.
	<b>Senior Domestic Competition</b>	Competition will recommence from Monday the 20 <sup>th</sup> July 2020 (Term 3, Week 1). Team nominations will be released on Tuesday 16 <sup>th</sup> June 2020
	<b>3 x 3 Competition</b>	Our brand new 3 x 3 competition is available on a week by week basis for 3 weeks. Tournaments will be held on Friday evenings, 3 <sup>rd</sup> July, 10 <sup>th</sup> July and 17 <sup>th</sup> July 2020. Nominations will be released on Tuesday 16 <sup>th</sup> June and will close one week prior to each competition.
OTHER	<b>Casual Shoot Around</b>	Casual shoot around will be available from Monday 15 <sup>th</sup> June 2020. To assist with venue capacity and to limit cash handling, bookings will need to be completed on our website. Price is \$30 for a half court for 60 minutes for up to 4 players.
	<b>Shooting Machine</b>	Our shooting machine is available for hire. To assist with venue capacity, machine availability and limiting contact payments bookings will need to be completed on our website. Price is \$30 per half hour with a maximum of 2 people at any one time. Senior Representative players will not be charged for use however we recommend calling ahead to ensure availability. Junior representative players will not be charged however must be supervised by a Rebels Coach.
	<b>Sunday Scrimmage</b>	Sunday Scrimmage will recommence on Sunday 21 <sup>st</sup> June 2020 in a no contact capacity (contact permitted after 1 <sup>st</sup> July 2020). Bookings and payment is to be made via our website. Maximum of 4 players per basket.
	<b>External Hirers</b>	Will be assessed on a case by case basis.

# WHAT TO EXPECT WHEN ENTERING THE STADIUM



SHOWER AT HOME PRIOR TO AND DIRECTLY AFTER GAMES.



YOU WILL BE ASKED A FEW HEALTH AND SAFETY QUESTIONS UPON ARRIVAL.



ENTRY PERMITTED 10 MINUTES PRIOR TO GAME TIME.



BIOSAFETY BRIEFING WILL BE COMPLETED ON ARRIVAL



ARRIVE GAME READY (DRESS/STRETCH/WARM UP AT HOME)



DO NOT BRING YOUR OWN BALL FOR DOMESTIC COMPETITION.

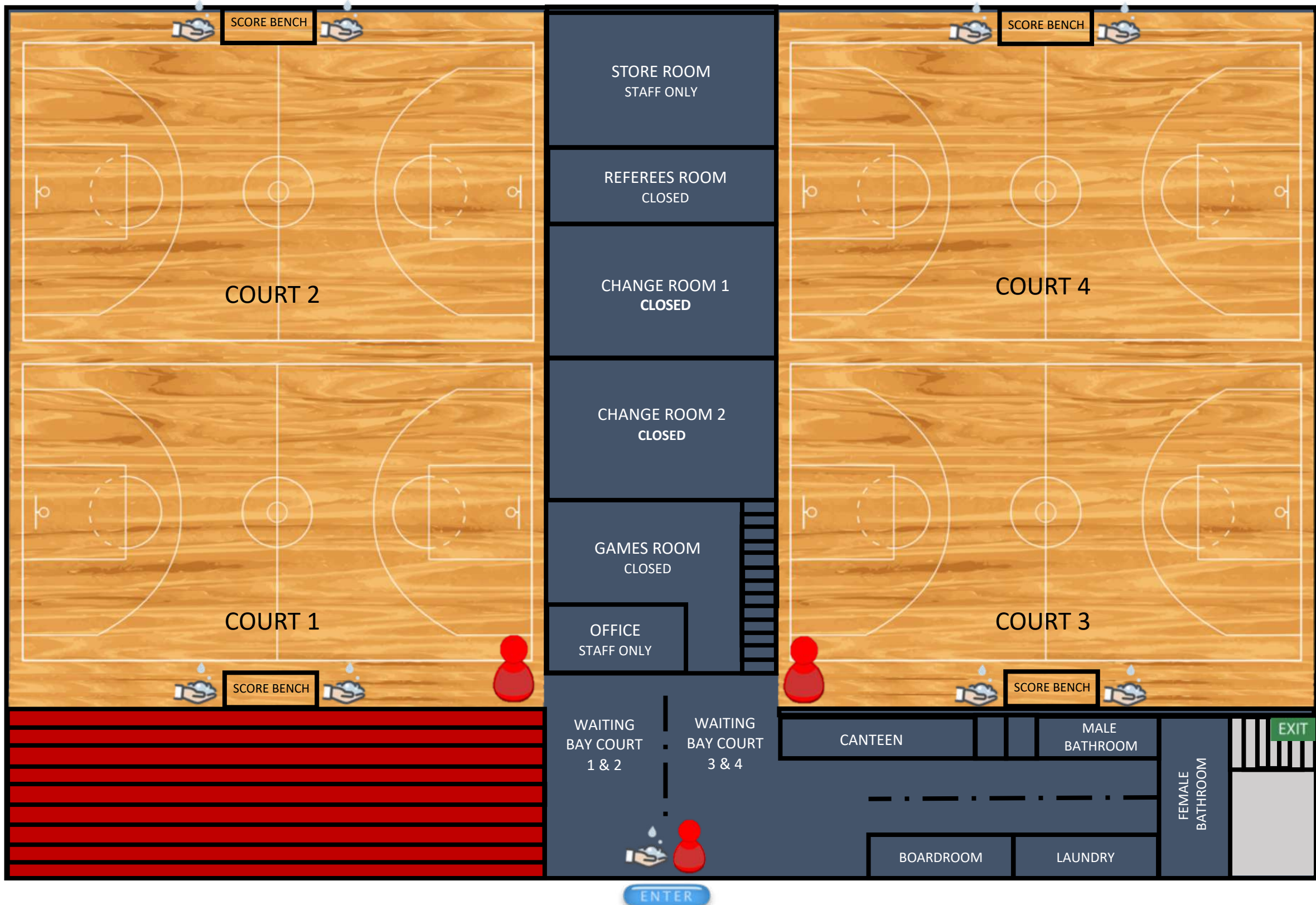







BRING ENOUGH WATER. WATER FOUNTAIN IS CLOSED UNTIL FURTHER NOTICE.



LIMIT UNNECESSARY PHYSICAL CONTACT (HIGH FIVES ETC)





-  = HAND SANITISER STATION
-  = BIO SAFETY OFFICER OR STAFF MEMBER
-  = ENTRY TO STADIUM
-  = EXIT FROM STADIUM
-  = BOLLARD